

# Yu-Fit Battery Configurator Tool



## Registration & Application Suite Installation Guide



# Contents

Yu-Fit Application Suite Download	3
Yu-Fit Installation Procedure	4
Yu-Fit Registration Procedure	7
Yu-Fit Update Procedure	9
Renewing Subscriptions	11
Options	13
Notes	15

# Yu-Fit Application Suite Download

Before using the Yu-Fit tool you first need to download the supporting software to your local computer. Follow this procedure to download the latest PC Suite from the [www.centurybatteries.co.nz](http://www.centurybatteries.co.nz) website. If you experience any problems contact Technical Support on **0800 93 93 93**.

1. Scroll to the bottom of the page and select the **'Yu-Fit Registration'** link.



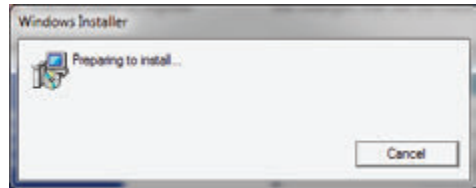
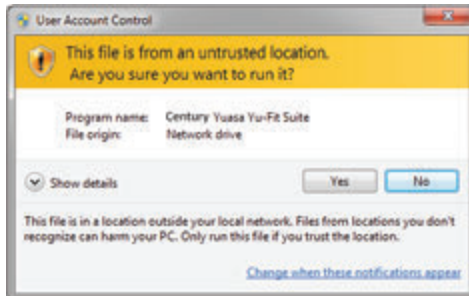
2. Select **'Run'**



# Yu-Fit Installation Procedure

Follow this procedure if you are installing the Yu-Fit PC Suite for the first time. If you experience problems with the installation please ensure that you have administrator rights on your PC. If you are still experiencing problems please use the web form on the website to contact us.

1. When you run the installer you are presented with a User Account Control message warning you that the application you are installing will make changes to your computer. It is imperative that you ensure that you have Administrator rights on the PC before continuing. Select 'Yes'.
2. Wait while the PC prepares to install.



3. After you have run the Yu-Fit suite application, the 'Welcome to the Century Yu-Fit Suite' will be displayed, select 'Next'.
4. The 'Select installation Folder' screen will appear accept the folder if appropriate and select 'Next'.



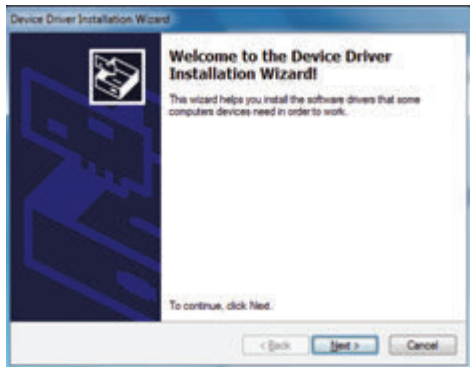
5. When the 'Confirm Installation' screen appears select 'Next'.



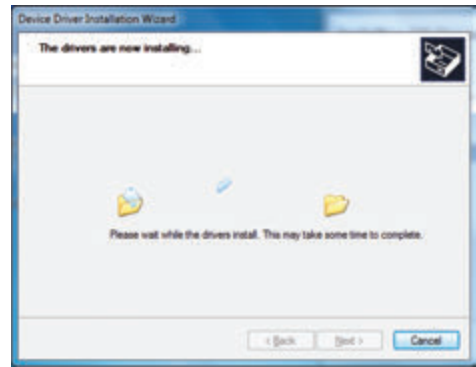
6. The 'Installing Century Yu-Fit Suite' screen will be launched, once the software has been successfully installed select 'Next'.



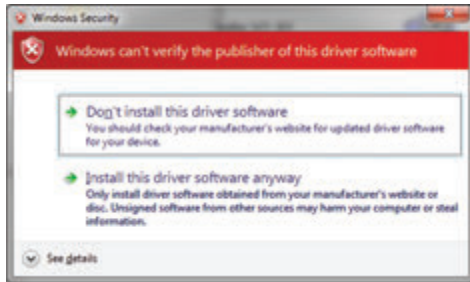
7. As this is the first time that your Yu-Fit has been connected to your PC, the 'Device Driver Installation Wizard' popup will be displayed. Select 'Next'.



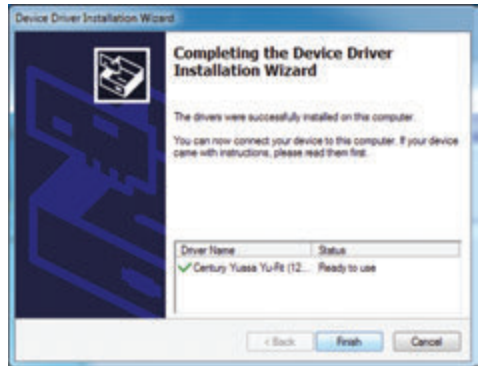
8. The installation will take a short time to complete; the screen below will be displayed during this process. Select 'Next'



9. Your PC may give you a warning saying the Publisher is unknown. Select **'Install the driver software anyway'** to accept the changes that will be made.



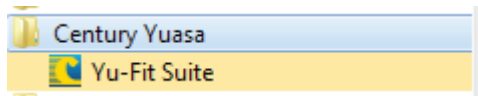
10. The **'Completing the Device Driver Installation Wizard'** screen is displayed, when your Yu-Fit has been detected. Select **'Finish'**.



11. You will see the screen **'Installation Complete'** that confirms that the installation was successful, select **'Close'**.

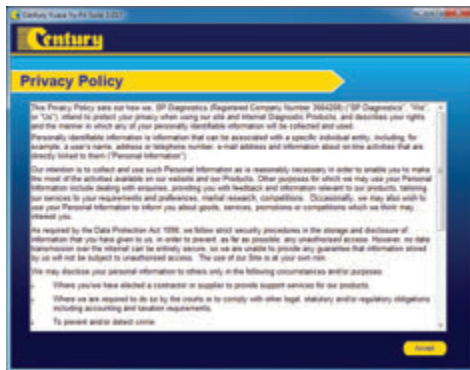


12. Run the Yu-Fit Suite Application from the start menu, select **'Start' – 'Programs' – 'Century Yuasa – 'Yu-Fit Suite'**. (There will also be an icon installed onto your desktop).



# Yu-Fit Registration Procedure

1. Read the Privacy Policy and accept before continuing.



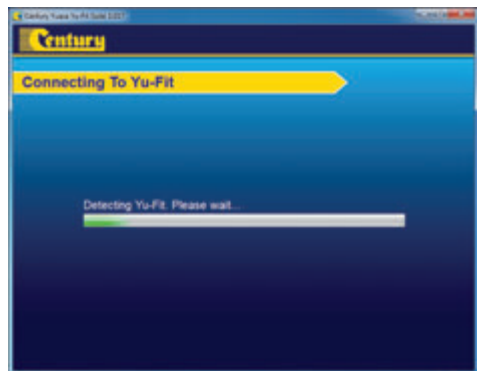
2. Connect the USB supplied to the Yu-Fit and then to a USB port on the PC. A main USB port (on the rear of the PC) opposed to an extension (on the front of the PC)



3. The Driver should indicate that it is fully installed and ready to use. If this does not happen, go to the Installing Driver section.



4. When you press the 'Next' button, the Yu-Fit will be detected by the Yu-Fit Suite.



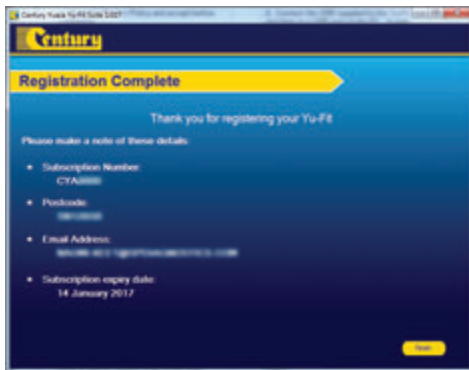
5. The Suite will then check if the internet connection is present. If you experience problems at this point you will be directed to the Tests & Checks section of the Yu-Fit Suite.



6. Complete the 'Product Registration' ensuring you complete all sections marked with a '\*'. Once complete press the 'Next' button.



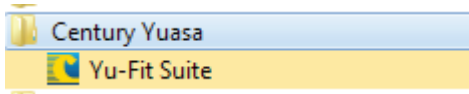
7. Once the information has been submitted, the Subscription Number, Postcode, Email address and subscription expiry date will be displayed back. Although these details are stored on your PC, It would be worthwhile making a note of these details in case you require them in the future. Select 'Finish'.





# Yu-Fit Update Procedure

**1.** Run the YU-FIT Suite Application  
From the start menu, select **'Start' – 'All Programs' – 'Century Yuasa – 'Yu-Fit Suite'**. (There will also be an icon installed onto your desktop).



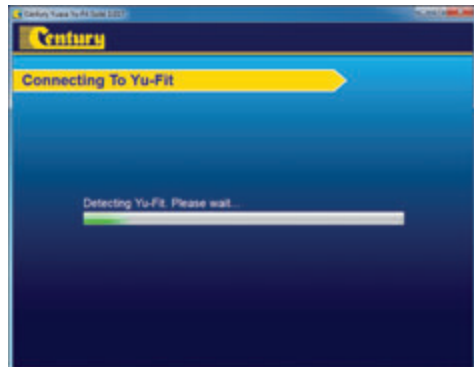
**2.** Select the option **'Get YU-FIT Updates'**.



**3.** Connect the USB supplied to the Yu-Fit and then to a USB port on the PC. A main USB port (on the rear of the PC) opposed to an extension (on the front of the PC)

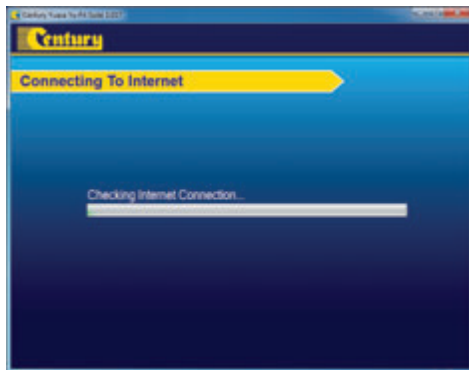


**4.** When you press the **'Next'** button, the Yu-Fit will be detected by the Yu-Fit Suite.



5. The Suite will then check if the internet connection is present. If you experience problems at this point you will be directed to the Tests & Checks section of the Yu-Fit Suite.

6. Follow the on screen instructions to update your tool to the latest version. A description of the updates will also be shown on screen. Select 'Download'.



## REMEMBER

The latest list of vehicles supported by the Yu-Fit is available @ [www.centurybatteries.co.nz](http://www.centurybatteries.co.nz)

# Renewing Application Subscriptions

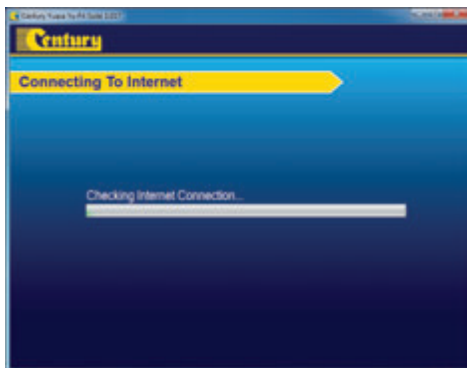
1. Select 'Application Store'.



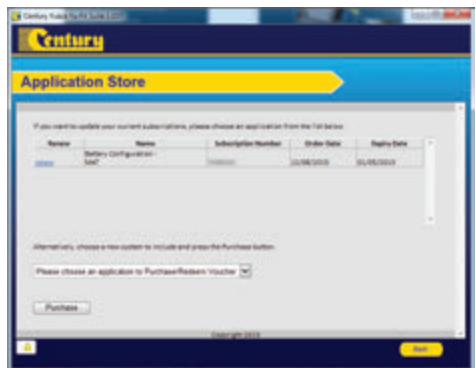
2. Connect your handset to the PC as directed.



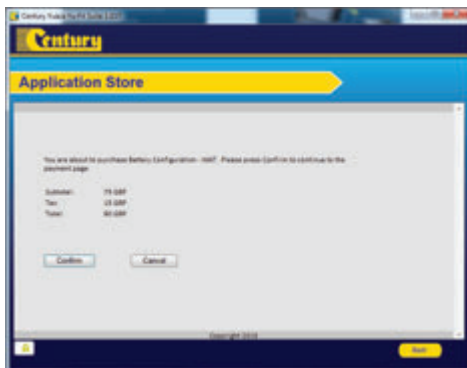
3. The suite will connect to the Application Store.



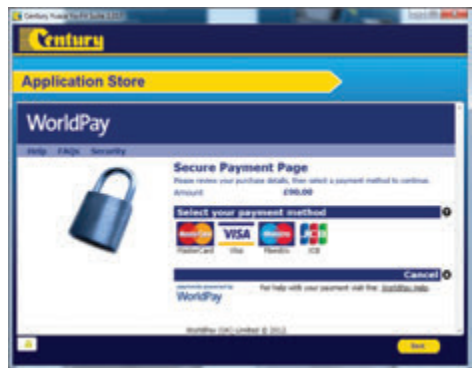
4. The following page should be displayed. Select 'Renew'.



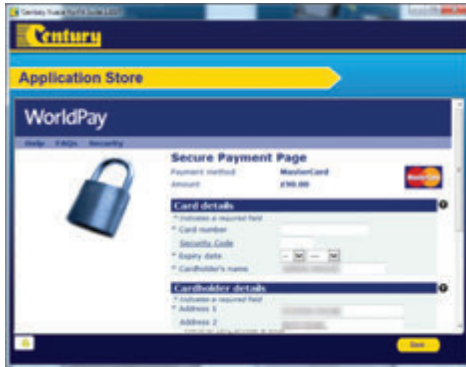
5. Select 'Confirm'.



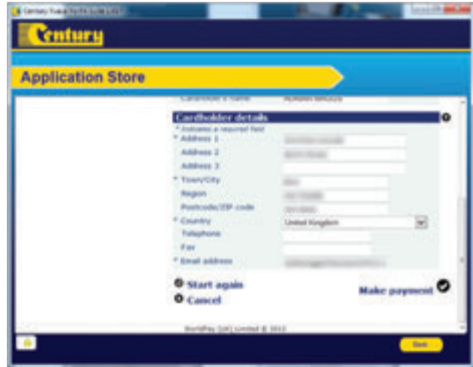
6. You will be directed to the payment page. Select the type of card you will be making the payment with.



7A. Enter your details as required.



7B Once all the required details are entered, select 'Make Payment'.

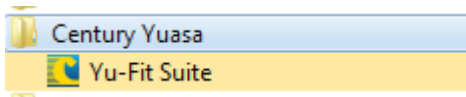


8. You will be directed to the payment confirmation screen.



# Renewing Application Subscriptions Continued

1. Run the YU-FIT Suite Application from the start menu select 'Start' – 'All Programs' – 'Century' – 'Yu-Fit Suite'. (There will also be an icon installed onto your desktop).



2. Select 'Options & Help' from the menu.



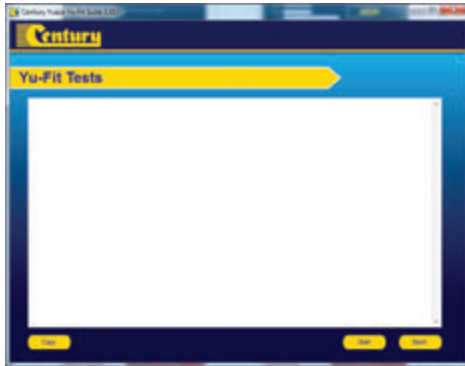
3. If you are advised to change your **Subscription Number & Postcode** you can do this from here.



4. Selecting the 'Tests and checks' button allows you to perform tests to verify that your Yu-Fit is functioning correctly and also verifies that you are able to connect to the website and download the latest software



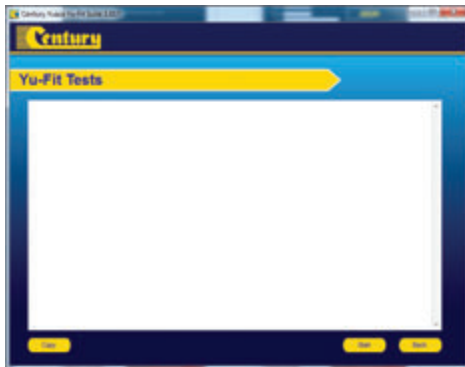
5. You will be asked to perform these tests if you experience problems and need to contact a customer services representative or engineer. This information is also reported back to the website in order for the engineer to assist you in resolving your problem.



6. Selecting the 'Yu-Fit re-install' button allows you to force the Yu-Fit to download your latest update again. This can be used if you think there is a problem with your last update



7. Connect your Yu-Fit as per the instructions within the Yu-Fit update suite. Connect mini USB to Yu-Fit and USB to PC. Refer to the 'Yu-Fit Update Procedure' for more information.



If you experience any problems contact  
Technical Support on 0800 93 93 93





**Century Yuasa Batteries (NZ) Ltd**

259 Church Street, Onehunga, Auckland, 1643

**T:** (09) 978 6666 **W:** [www.centurybatteries.co.nz](http://www.centurybatteries.co.nz)